

INSURANCE REIMBURSEMENT

TWO PATHS TO AFFORDABLE GI THERAPY

OPTION #1:

OUT-OF-NETWORK BENEFITS WITH REIMBURSIFY

STEP 1



Verify benefits and estimated reimbursement rate on [GIPsychology.com](https://www.GIPsychology.com)

STEP 2



Pay treatment fees out of pocket at the time of service:
Intake: \$325
Follow-Ups: \$250

STEP 3



We give you a Superbill to submit to Reimbursify for possible reimbursement

STEP 4



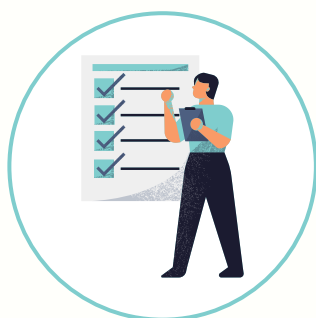
Reimbursify works with your insurance to get you reimbursed

OPTION #2:

SINGLE CASE AGREEMENT



Patient requests a Single Case Agreement packet from their insurance and checks for in-network availability



Our admin staff provides support with completing the application



If no in-network provider exists, your insurance company may authorize in-network reimbursement



If approved, you are provided in-network level reimbursement for part of your fees