

TWO WAYS TO RECEIVE INSURANCE REIMBURSEMENT



OPTION #1:

OUT-OF-NETWORK BENEFITS

BASED ON AN HOURLY RATE OF \$240 AND AN AVERAGE OF 10 SESSIONS

STEP 1



Pay at the
time of
service

STEP 2



GI Psychology
gives you a
Superbill.
You submit this
to your insurance
provider.

EACH INSURANCE
PROVIDER
REIMBURSES
DIFFERENTLY, BUT ON
AVERAGE, PATIENTS
GET 50% OF THEIR
MONEY REIMBURSED.

SO, WITH 10 SESSIONS
AND A \$2400
PAYMENT, AN
AVERAGE
REIMBURSEMENT
WOULD BE \$1200.

OPTION #2:

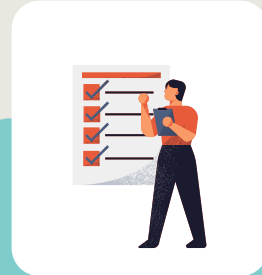
SINGLE CASE AGREEMENT



Patient requests a
Single Case
Agreement packet
from their insurance
and checks for in-
network availability.



Our admin staff
provides support
with completing the
application and
potentially obtaining
a medical
necessity letter.



If no in-network
provider exists, your
insurance company
may authorize
in-network
reimbursement.



Often, this means
that you are
reimbursed all
fees, minus your
deductible.

Contact us:

703.910.2577



www.GIpsychology.com